



---

# USER MANUAL

---

# OWNER'S MANUAL

You are now the owner of one of the world's finest and most superbly engineered firearms. The model you have purchased has been designed and crafted to meet the requirements of the dedicated hunter and target competition shooter. Using the normal care and the correct ammunition the rifle will serve you dependably for many years.

To ensure the best performance and reliability from your firearm, please read and follow the procedures and WARNINGS outlined in this manual. Yours and the safety of the others is up to you!

READ with attention all the information of this manual and the suggestion of the cartridge manufacturer that you intend to use in your new gun.

This manual should always accompany this firearm and be transferred with it upon change of ownership or when this gun is loaned to another person.

If you have any questions or comments about our Bolt Action rifle, its use and maintenance or need more information about products and accessories, please call or write to:

Zoli Antonio Srl  
via Zanardelli 39  
25063 Gardone VT (BS)  
Tel. 030-8912161/2  
E-mail: [info@zoli.it](mailto:info@zoli.it)

# MANUAL INDEX

Rules and warnings for safety .....	4
Technical data .....	8
Assembly and disassembly of the gun AZ1900 .....	10
Rules to follow before shooting .....	12
Safety AZ1900 .....	12
Trigger Group AZ1900 .....	12
Assembly and disassembly of the gun Taiga/Evolution .....	16
Safety Taiga/Evolution .....	18
Ammunitions .....	20
Loading / Unloading the gun .....	21
Adjusting the sights .....	22
Mounting the scope .....	23
Service .....	25
Assistance and spare parts .....	27
Exploded view AZ1900 .....	28
Exploded view Taiga/Evolution .....	30

# IMPORTANT SAFETY INFORMATION

Zoli Antonio Srl is not responsible in any manner whatsoever for the improper handling, use or resale under local law and regulations.

The ZOLI Company shall not be responsible in any manner whatsoever for malfunctioning of the firearm, for physical injury or for property damage resulting in whole or part caused by:

- Criminal or negligent discharge
- Improper or careless handling
- Unauthorized modification
- Defective, improper, hand-loaded or re-loaded ammunition, defective factory ammunition Corrosion
- Neglect
- Events beyond our direct and immediate control.

This limitation is valid regardless of whether liability is asserted on the basis of contract, negligence or strict liability (including failure to warn). Under no circumstances shall ZOLI be liable for incidental or consequential damages, such as loss of use of property, commercial loss and loss of earnings and profits. Carelessness and ignorance cannot be tolerated when handling a firearm. Treat every firearm with respect and follow the safety rules outlined in this manual.

## IMPORTANT

**Always remember that you, the owner, are ultimately responsible for firearm safety. Please, read and follow all safety procedures outlined in this manual before loading and shooting your new gun. This manual contains information you need to use your rifle safely and effectively.**

Check everytime that the chamber of the gun is empty: maybe a cartridge remains in the chamber after you take out the magazine (in the version with clip magazine) or you open the floor plate to remove the ammunition. Before putting the rifle in the gun cover or in the gun cabinet and before

any maintenance or cleaning operation, it is better to put the gun on safe, take out the clip magazine or open the floor plate.

Open the bolt with care to be sure the gun is completely unloaded. Only after performing this operation, can you clean the gun put it in a safe place. Always remember that the safest gun is the one that is fully unloaded and with the safe on (you can see the white point), the bolt open and no cartridge in the chamber or magazine.

## PAY ATTENTION!

With improper handling you may cause the death of another person, a serious injury or damage your property or the property of a third person. When you handle a gun, keep at maximum level your attention and follow strictly the rules contained in this manual. These rules should minimize the possible risks but will never eliminate them entirely.

The correct functioning of the gun is only assured if the gun is completely original, if they are repaired only with genuine Zoli spare parts and if the gun is used for the use it was developed.

Ignorance and careless are the major causes of gun related accidents. Whenever possible attend to a "hunter safety" course or "Firearm safety" course that could be considered an investment for you future. Encourage other hunters or shooters to enrol with you.

## ATTENTION!

Even if your rifle is equipped with an effective, well-designed safety mechanism, **NO SAFETY MECHANISM IS A SUBSTITUTE FOR PROPER GUN HANDLING.** Any safety mechanism could break down or malfunction; even if the safety is in "ON" (you can see the white spot), your firearm could fire if dropped.

**YOU AND YOU ALONE ARE THE ULTIMATE SAFETY MECHANISM!**  
**If you are not sure that the gun is working properly, you have to stop hunting or shooting, unload immediately and take the gun to a gunsmith for a check over.**

# THE COMMANDMENTS OF FIREARM SAFETY

1. **ALWAYS** treat your gun as if it were loaded.
2. **NEVER POINT** you gun at the target until you are not ready to shoot.
3. **DON'T TRUST** people who say that the gun is shown to you is unloaded. Check for yourself the status of the gun, with the fingers off the trigger and the barrel pointed in a safe direction.
4. **ALWAYS ENSURE** that the action, the chamber and the barrel are free of any kind of obstruction. Eliminate any obstruction immediately before use the gun. Any obstruction may cause the destruction of the gun, severe or fatal injuries to the shooter or the people nearby.
5. **NEVER PULL** the trigger or put the finger on the trigger until you point the muzzle of the barrel at the target or in a safe direction.
6. **NEVER LEAVE** the gun in an unsafe support; if the gun should fall down there is the risk that the gun will fire.
7. **STORAGE** Unload your Zoli bolt action rifle in the manner described in this manual (see page 13). After verifying that the chamber is empty; the safe is in the ON position and the magazine without cartridges, put the gun in the cabinet.
8. **NEVER SHOOT** your gun at stones, rocks or at a surface of water. The bullet may ricochet, changing the trajectory, out of your control.
9. If you want to check the accuracy of your gun in open space, verify that the place you are shooting is safe, with proper barriers to contain the bullets.
10. **BE SURE**, any time you pull the trigger that the area behind the target is completely safe. The bullet could hit at very long distance (more than 6km / 4miles). **DON'T SHOOT** if you have doubts or you are not sure about the safety of the shot.
11. When you are with other hunters or at the shooting ground, **PAY ATTENTION** that your gun is unloaded, with the bolt open. During the loading of the gun and the preparation for the shot, **KEEP** the muzzle of the gun in a safe direction.
12. **NEVER LEAVE** your gun unattended and out of your sight. Children or unauthorized people could use in a wrong manner and could cause damage to people or property.
13. **NEVER ENTER** into a public building with a loaded gun.
14. **NEVER USE** you gun if it has functioning problems.
15. **CARRY** your gun unloaded and in safe condition.
16. **IN CASE OF MISFIRE**. If you gun doesn't fire after pulling the trigger, **ALWAYS KEEP** your gun in a safe direction and wait 30 seconds. If the

problem is due to a defective primer, after this time you can open the bolt and unload the gun. Take out the unfired cartridge from the chamber and check the primer. If the primer has the indentation of the firing pin out of center of the percussion cap or the indentation is weak, it is better to take the gun to a gunsmith. If the primer is well hit with the same force of the other ammunition fired before, it means that the cartridge was defected. Only in this case you can re-load the gun and fire.

17. **NEVER WALK, NEVER CLIMB or FOLLOW** other hunters with a gun loaded and ready to fire.
18. **NEVER USE** alcohol, drugs and medicine that can affect your mind during the handling of your gun.
19. **ALWAYS WEAR** eye and hearing protection to avoid temporary or permanent traumas.
20. **BE SURE** that your gun is completely unloaded during cleaning and maintenance operation, during travel and the handling by a third person; it is better to remove the bolt and the clip magazine (in the version with it fitted).
21. **PAY ATTENTION** during the extraction of the fired cases because they are very hot and could burn you or people near you if you touched them or they come in contact with the skin.
22. **USE** only proper, factory-made ammunition stored in excellent condition, suitable for your particular gun. Using reloaded or low quality ammunition may void the warranty on your gun because it is not possible to verify if your cartridges comply with the performance standards established by SAAMI in the USA and CIP in Europe. If you want to use reloaded cartridges, **VERIFY** everytime that they must be of the proper calibre, and of the right length and that they have been reloaded following the safety rules of the reloading manual.

## SPECIAL SAFETY RULES ABOUT CHILDREN

1. **STORE** your guns and ammunition in separate and locked places, out of the sight and reach of the children
2. **TEACH** the children to handle the guns with a lot of attention relating to respect and fear. If you want to teach the children about the handling of the guns, **BE SURE** that the gun is unloaded and that the children treat them in a correct way.
3. **NEVER LEAVE YOUR GUNS UNATTENDED**. Children may take in their hands and cause injuries, even lethal to people or damage to property
4. **ALWAYS KEEP and CARRY** your gun in its case.

# TECHNICAL DETAILS - GUN MEASURES

## AZ 1900 / TAIGA/ EVOLUTION

### **Total Length:**

114 cm (45") with 60 cm (24") barrel

### **Barrel Length:**

53 (21") - 60 cm (24"), 65 cm (26") related to some magnum calibers

### **Weight:**

From 3,3 kg (7 ¼ lbs) - (without mounts and scope )

**MODEL  
AZ1900**

# ASSEMBLY AND DISASSEMBLY OF THE GUN



**WARNING:** wear eye protection prior to performing any assembly or disassembly.

## ASSEMBLY

Before assembling your new gun, clean the receiver and the barrel, lubricate the bolt with high quality gun oil. Verify that the barrel is free of any kind of obstruction, clean the bore with a brush and a felt barrel wipe of the right diameter to eliminate the solvent and the oil you used. After this operation, take the gun with the right hand, verify that no cartridges are in the chamber and in the magazine and the safe is off. Pull and hold the trigger then carefully insert the bolt (fig.1), paying attention to insert the fins (lugs) in the internal rail of the receiver. Before taking your gun hunting or to a target shooting ground, verify that the safe and the trigger are working properly, otherwise before shooting it is better to go to a gunsmith for a check over.



## DISASSEMBLY

Before disassembling, be sure that the chamber and the magazine are empty, take the rifle in the right hand (the left for left-handed shooters), keep the trigger pulled tightly; open and pull back the bolt from the receiver (fig. 2). Put the gun in its case or in the cabinet where you keep your other firearms. If your bolt-action rifle has a clip magazine, remove it and put it in a safe place, away from the gun.



If you want to disassemble the stock, put the safe on (you see the white spot), unscrew the screws positioned in the back part of the trigger guard (fig. 3) and the other in the front, (fig. 4) and carefully detach the receiver – barrel group from the stock.



After checking and cleaning the gun, put your rifle on safe and mount the stock and refit the screws ensuring they are fully tightened. Always use a good fitting screwdriver.

## DISASSEMBLY THE BOLT SHROUD.

If you want to disassembly the bolt shroud or if during the maintenance operations you accidentally disassemble the bolt shroud. Hold the bolt tight in your hand and turn the shroud clockwise (fig 5) until it can be removed form the main body of the bolt (fig. 6).



In the AZ 1900 Left model you have to turn the bolt in the opposite direction. To reassemble reverse this operation.



## IMPORTANT OPERATION BEFORE SHOOTING

Before shooting, clean the barrel with a small quantity of high quality barrel cleaner and eliminate any traces of the cleaner using a felt patch on a cleaning rod until the bore is perfectly shiny and oil free. If the gun is not assembled, clean the bolt and then put it into the receiver, lubricating it with a small amount of gun oil.

### ! SAFE

Even if your rifle is equipped with an effective, well-designed safety mechanism, NO SAFETY MECHANISM IS A SUBSTITUTE FOR PROPER GUN HANDLING. Any safety mechanism could break down or malfunction; even if the safety is in "ON" (you can see the white spot), your firearm could fire if dropped.

YOU AND YOU ALONE ARE THE ULTIMATE SAFETY MECHANISM!

If you are not sure that the gun is working properly, you have to stop hunting or shooting and take the gun to a gunsmith for a check over.

### POSITION 1: SAFE ON

To engage the safe you have to move the button on the right side of the gun (in the left side in AZ 1900 Left model) towards the stock to see the white spot (fig 7).



With the safe on, the bolt is blocked; to open it, it is necessary to press the double safety lever forwards to open the bolt handle (fig. 8)



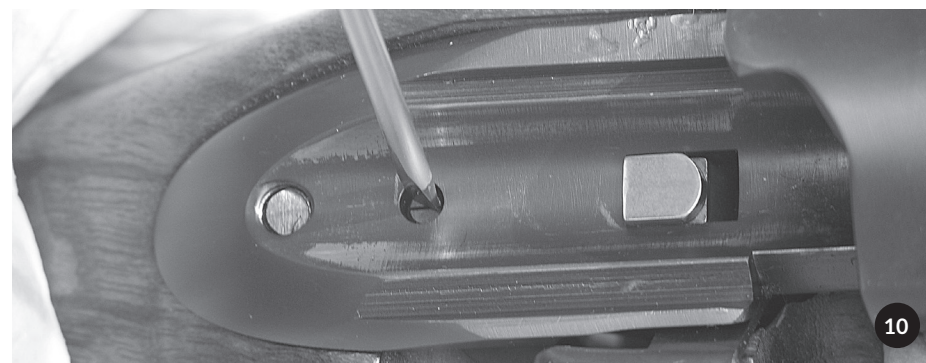
### POSITION 2: SAFE OFF – GUN READY TO FIRE



To take the gun off safe, move the safe lever back in the direction of the barrel muzzle until a red spot appears (fig. 9). In this position the gun is ALWAYS ready to fire and you have to handle it with great care.

### TRIGGER

The various versions of our AZ 1900 bolt action could be equipped with single stage trigger or a set trigger. **AZ 1900 with single stage trigger.** To fire it is necessary take off the safety and pull the trigger. Our trigger is direct and the gun fires immediately, without hesitation.



To adjust the weight of the trigger, you have to use the screw positioned under the bolt, in the rear part of the receiver (fig. 10).

## AZ 1900 WITH SET TRIGGER.

The set trigger is a mechanism that allows you to reduce the finger pressure required on the trigger to fire the gun.

Set trigger utilization.

When you are on target with the gun steady on its rest, you have to push forward the trigger in the direction of the muzzle (fig. 11) until it is blocked by the set trigger mechanism (fig.12).



The pull weight of the set trigger is very low, PAY ATTENTION when you touch the trigger because you may fire without being in the right position and right on target. The set trigger can be very dangerous if used improperly and could cause serious injuries to you and others. The set trigger must be loaded only when ready to fire and when you have the highest safety conditions! To unset the set trigger it is necessary that you put the gun safe to the ON position (you see the white spot). Open the bolt and pull the trigger. If you don't do in this way, the set trigger could cause the gun to fire by opening the bolt.

**Safety is paramount you must observe this procedure.**

### IMPORTANT!

When you put the set trigger on, AVOID any sudden movement or, worse, a fall of the gun and PAY ATTENTION during the handling because, the gun could shoot even if you don't pull the trigger.! When the set trigger is on, the gun must be pointed in a safe direction!!! The set trigger is adjusted in our factory before selling the gun; it is possible to have a little adjustment of the weight by working on the screw in front of the trigger. If someone modifies the trigger group or the set trigger weight to level lower than our factory setting, the warranty will be compromised.

Only a professional gunsmith should make the set trigger adjustments.

MODEL  
TAIGA AND  
EVOLUTION



# ASSEMBLY AND DISASSEMBLY OF THE GUN



**WARNING:** wear eye protection prior to performing any assembly or disassembly.

## ASSEMBLY

Before assembling your new gun, clean the receiver and the barrel, lubricate the bolt with high quality gun oil. Verify that the barrel is free of any kind of obstruction, clean the bore with a brush and a felt barrel wipe of the right diameter to eliminate the solvent and the oil you used. After this operation, verify that no cartridges are in the chamber and in the magazine.

Push the left side bottom (fig.1 and 2)



Paying attention to insert the fins (lugs) in the internal rail of the receiver. Before taking your gun hunting or to a target shooting ground, verify that the safe and the trigger are working properly, otherwise before shooting it is better to go to a gunsmith for a check over.

## DISASSEMBLY

Before disassembling, be sure that the chamber and the magazine are empty, push the left side bottom and pull back the bolt from the receiver (fig. 3 and 4).



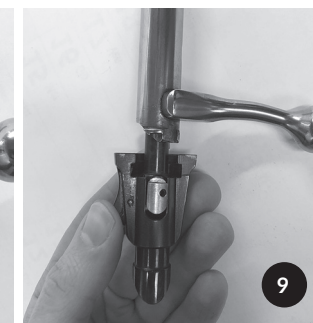
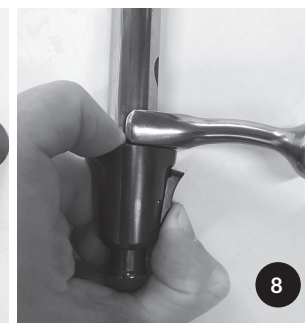
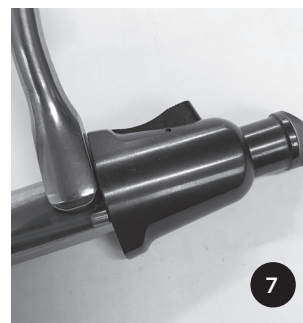
Put the rifle in its case or in the cabinet where you keep your other firearms. If your bolt-action rifle has a clip magazine, remove it and put it in a safe place, away from the gun.

If you want to disassemble the stock, put the safe on (you see the white spot), unscrew the screws positioned in the back part of the trigger guard (fig. 4) and the other in the front, and carefully detach the receiver – barrel group from the stock.

## DISASSEMBLY THE BOLT SHROUD.

If you want to disassemble the bolt shroud or if during the maintenance operations you accidentally disassemble the bolt shroud.

Be sure that back button is release (fig. 7) Hold the bolt tight in you hand, press the bolt shroud retainer pin and the right side button in the same time(fig. 8) and turn the shroud clockwise until it can be removed from the main body of the bolt (fig. 9)



In the Taiga Left model you have to turn the bolt in the opposite direction. To reassemble reverse this operation.

## IMPORTANT OPERATION BEFORE SHOOTING

Before shooting, clean the barrel with a small quantity of high quality barrel cleaner and eliminate any traces of the cleaner using a felt patch on a cleaning rod until the bore is perfectly shiny and oil free. If the gun is not assembled, clean the bolt and then put it into the receiver, lubricating it with a small amount of gun oil.

### SAFE

This system when the rifle is uncocked has the firing pin spring completely unloaded and makes the rifle impossible to fire. Even if your rifle is equipped with an effective, well designed safety system, consisting in a hand cocking system that allows you to cock your rifle only before you are ready to shoot. NO SAFETY MECHANISM IS A SUBSTITUTE FOR PROPER GUN HANDLING. Any safety mechanism could break down or malfunction; YOU AND YOU ALONE ARE THE ULTIMATE SAFETY MECHANISM! If you are not sure that the rifle is working properly, you have to stop hunting or shooting and take the gun to a gunsmith for a check over.

### POSITION 1: SAFE ON

1. Push and hold the cocking button
2. Meanwhile push the right side button (fig.10)
3. Release the back button (fig.11)



With the safe on, the bolt is blocked; to open it, it is necessary to press the right side button to open the bolt handle.

### POSITION 1: SAFE OFF – GUN READY TO FIRE



To take the gun off safe, press the button located at the rear end of the bolt shroud. (fig. 12 -13)rel muzzle until a red spot appears (fig. 9). In this position the gun is ALWAYS ready to fire and you have to handle it with great care.

### TRIGGER

#### Taiga with single set trigger

To fire it is necessary to cock the rifle by simply pressing the button located at the rear end of the bolt shroud and to pull the trigger. The trigger is direct and the rifle fires immediately, without hesitation.

## AMMUNITION

Ignorance and carelessness are the main causes for the accidents related to the use of the guns.

For this reason, ALWAYS VERIFY the ammunition you are using. VERIFY that ammunition is the same of the caliber as your gun and PAY ATTENTION on the inscription on the cartridge box to not make a mistake with calibers with the same diameter bullet but different cases (eg.: 270 Win, 270 Weatherby Magnum, 270 WSM) or the same case but different diameter of the neck (es: 25.06 Rem, 270 Win, 30.06 Spr.).

Zoli could not be responsible for any accident or problem caused by reloaded ammunition; in this case the warranty will be void immediately. If you use reloaded cartridges, VERIFY that they are of the proper caliber, of the right length and that they were re-loaded following the data from a reloading manual. If after firing you don't hear the shot, STAY in position for some seconds before moving the gun and opening the bolt. KEEP the muzzle of the gun in a safe direction until you have completed the operation of unloading the rifle.

Zoli recommends the use of ammunition in perfect condition, of sure origin and commercial factory-loaded.

## WARNING

Using the wrong ammunition could destroy your gun and cause serious personal or third person injury or death.

For your safety, the safety of others and to avoid the damage to your gun, beware of barrel obstruction, even if partially blocked an obstruction such as mud, snow, dirt or any other foreign object, can increase the pressure and cause damage to your gun and cause injury to you and others.

## LOADING AND UNLOADING OF THE GUN

To load the gun there are different procedures:

1. If your gun has clip magazine, you have to pull the lever positioned in the front of the trigger (fig. 13) and allow the magazine to fall lightly down. The cartridges will be inserted in the magazine one by one, with the bullet towards the round part (fig. 14)
2. If your gun has the floor plate, you have to open the bolt and insert the ammunition from the top part of the receiver (fig. 15).
3. After filling the magazine, close the bolt and chamber the cartridge.



To unload the gun:

1. If your gun has clip magazine, put your gun on safe, pull the lever in front of safety button, open the bolt and take out the cartridge in the chamber. Pull the lever in front of the trigger (fig. 16) and take out the magazine to complete the unloading procedure.
2. If your gun has the floor plate, put your gun on safe, pull the lever in front of safety button and open the bolt to remove the cartridge from the chamber. Pull the lever in front of the trigger to open the floor plate (fig. 17) and take in your hand the cartridges (fig. 18).

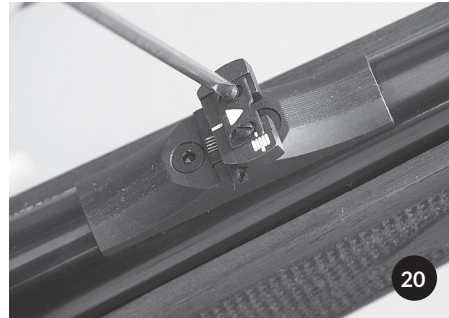




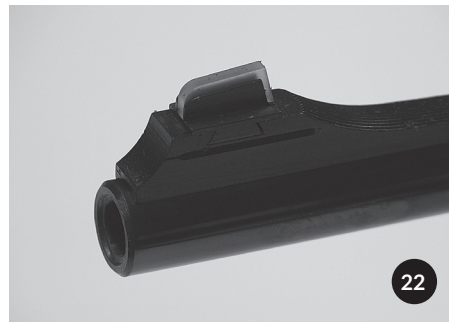
## ADJUSTING THE SIGHTS

Adjusting the sight is quite easy.

The rear sight can be adjusted in windage (fig. 19) and elevation (fig. 20); the front sight can be adjusted only in windage.



If your AZ 1900 has a battue sight, the windage can be adjusted with an Allen key (fig. 21). The front sight could be adjusted only in windage with a plastic hammer (fig. 22)



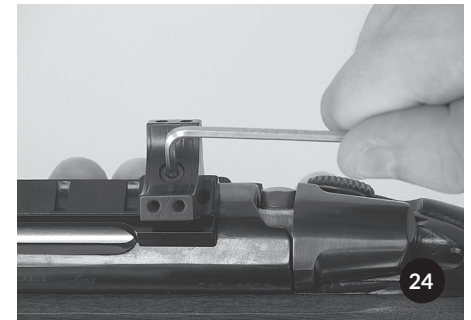
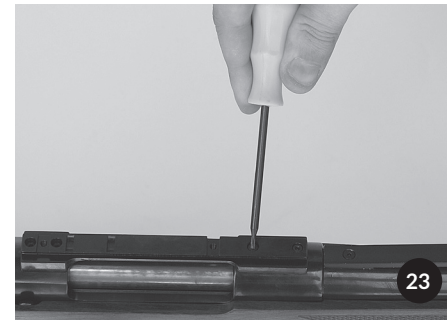
## MOUNTING THE SCOPE

Zoli RECOMMENDS the use of our original scope mounts.

On the receiver there are 4 threaded holes to mount our base for the scope ring mounts; lay the base on the receiver and fix with the screws (fig. 23) provided ensuring that they are fully tightened.

Use a good fitting screwdriver or a suitable wrench. On the base you should:

1. Mount two rings of 1" or 30 mm diameter available in different heights to accommodated differing scope object lens diameters.
2. First remove the top cap from each ring mount, place the bottom part on the base attached to the rifle and fix in place with the screw provided again ensuring it is fully tightened. (fig 24).



Next place the scope on the rings and adjust the eye relief to suit the user ensuring sufficient relief so not to injure the user through recoil. Lastly fit the top caps and tighten the screws in sequence to give equal tension on both sides of the caps.

3. Mounting a fast detachable scope mount with 1" or 30mm ring First place the scope mount on the steel base attached to the receiver



ensuring that the recoil lug is properly engaged with the recess in the base (fig. 25) and close the two locking handles on the left hand side with equal tension. It is very important that the locking handles are correctly adjusted to the position shown in (fig. 26) .

To do this release each one in turn and adjust the screw on the right hand side of the mount ( fig 27) until the handle locks in the correct position. Next remove the mount and tighten the grub screws to lock the adjusting screws in position (fig. 28 ).



Now remove the top caps, place your scope on the rings and adjust the eye relief to suit the user ensuring sufficient relief so not to injure the user through recoil, re-fit the top caps and tighten the screws with equal tension. There is provision to adjust the windage on the rear mount by use of the 2 grub screws (fig 29). This best done by bore sighting or the use of a collimator. After setting the windage fully tighten the screws fixing the rings to the base. Providing this operation is carried out with care after final zeroing you can remove and refit your scope with no deviation in the zero point.



4. Mounting a fixed scope mount with different height rings of 1" or 30 mm diameter. Place the scope mount onto the base attached to the receiver ensuring that the recoil lug is seated in the recess in the base and tighten the Allen screws on the left hand side with equal tension (fig 30). Now remove the top caps, place your scope on the rings and adjust the eye relief to suit the user ensuring sufficient relief so not to injure the user through recoil, re-fit the top caps and tighten the screws with equal tension.



If you prefer to use other scope mounts, verify, before buying, that they are suitable for the AZ1900 relating to the front and rear of the receiver and the pitch of the holes is the same or the receiver. Incorrect scope mounting may compromise the accuracy of the gun; ALWAYS VERIFY that the screws are locked tight and the fitting has been done correctly by a competent person.



# REPAIR AND ASSISTANCE

Although your shotgun has been precision manufactured and assembled from the best quality materials, there is always the possibility of damage or need for servicing and/or part replacement.

If you suspect your gun might be damaged or if you ever experience any malfunctioning or notice any looseness in the action of your shotgun, stop using it immediately. Return it to zoli factory / dealer / distributor for inspection and any necessary.

# TO RETURN YOUR AZ 1900

Here is what to do when you return your rifle to Zoli:

Make sure the gun is unloaded and there are no ammunition in the magazine and in the chamber. Pack the rifle securely to prevent damage , preferably in its original shipping case if available or in a plastic case. Enclose a letter with your name, complete address, phone number, model of AZ 1900 and serial number and a detailed explanation of the problem you have encountered or the work you want performed. If repairs are requested under warranty, enclose a copy of the original sales receipt.

Ship your gun insured and prepaid (we can not accept collect shipments) to:

**ZOLI ANTONIO S.r.l.**  
**via Zanardelli, 39**  
**25063 Gardone VT (BS)**  
**ITALY.**

Generally an individual may ship a gun to the manufacturer for repair or service. Some states or localities, however, may prohibit this. If regulations apply to you, your gun must be shipped and returned to an authorized gun dealer.

**NOTE:**  
any shipment of firearms outside of the borders of Italy is subject to the valid laws of that specific country, which you must strictly follow.

# ORDERING PARTS

Before you order any parts, please be advised that, while most gunsmiths may be perfectly capable of repairing your gun, we don't vouch for any individual's skill or workmanship. Remember, unauthorized adjustments or part replacement can void your service warranty.

Your shotgun is a precision instrument and replacement parts require a trained gunsmith to ensure proper installation and operation. Remember to always specify the model and serial number of your shotgun when ordering parts.

The most sensible decision you can make if your shotgun needs servicing is to simply return it to the Zoli Service Department.

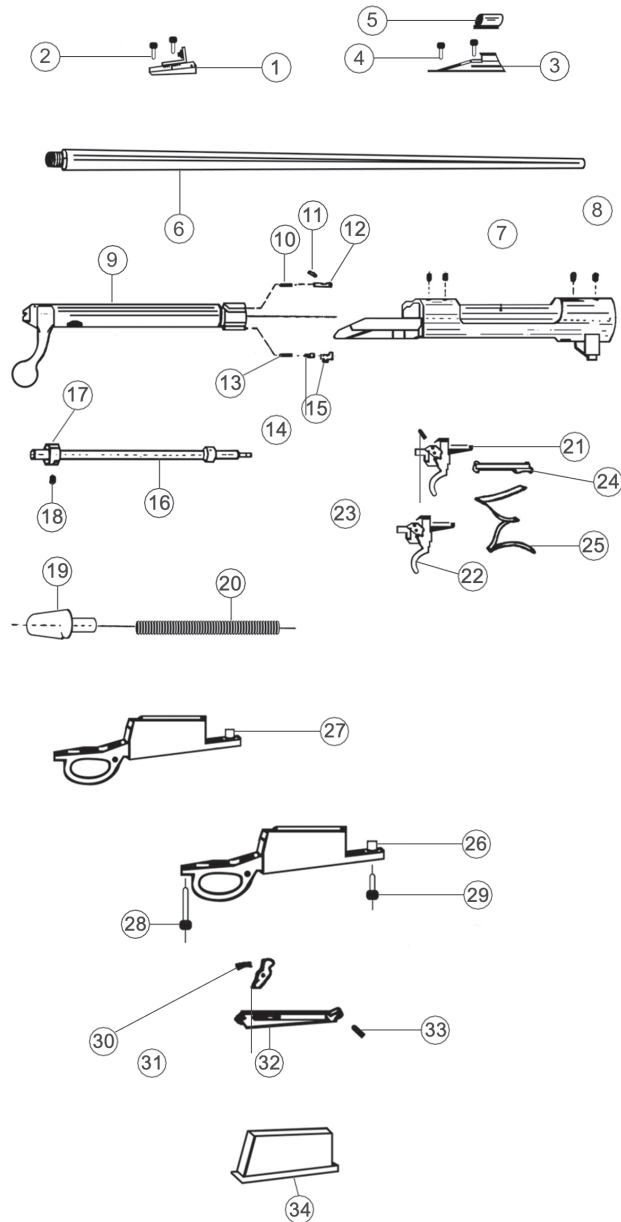
The serial number of your shotgun is located on the left part of the receiver. Record the serial number here for the future reference.

**MODEL .....**

**SERIAL NUMBER .....**

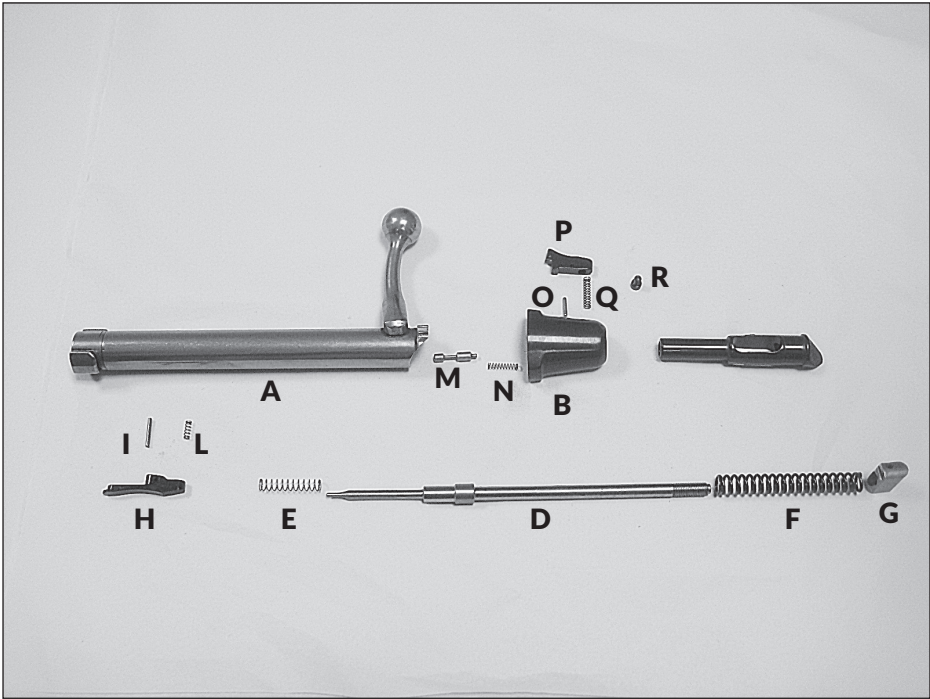
**ZOLI CAN NOT HELD RESPONSIBLE FOR THE  
FUNCTIONING AND SAFETY OF ANY FIREARM WHICH  
HAS BEEN ALTERED OR CHANGED FROM THE ORIGINAL  
FACTORY SPECIFICATIONS**

# AZ1900 EXPLODED VIEW



1. rear sight
2. rear sight screws
3. front sight
4. front sight screws
5. sight tunnel
6. barrel
7. action
8. scope filler screws
9. boi
10. ejector spring
11. ejector pin
12. ejector
13. extractor spring
14. extractor pin
15. extractor
16. firing pin assembly
17. pawl
18. pawl grub screw
19. boi shroud
20. firing pin spring
21. single stage trigger group
22. set trigger group
23. trigger group pin
24. follower
25. follower spring
26. floor plate housing
27. clip magazine housing
28. floor plate housing long screw
29. floor plate housing short screw
30. floor plate lever spring
31. floor plate release lever
32. floor plate
33. floor plate pin
34. detachable magazine

# TAIGA AND EVOLUTION EXPLODED VIEW



Ref	DESCRIPTION	CODICE
A	BOLT	004SE74
B	BOLT SHROUD	009SC66
C	COCKING BUTTON	011SC70
D	FIRING-PIN	028MC12
E	COUNTER SPRING	011MC00
F	MAIN COCKING SPRING	011MC99
G	PAWL	052MC59
H	BOLT RELEASE BUTTON	015SE78
I	PIN Ø 2x14	034RU53
L	BOLT RELEASE BOTTOM SPRING	011MCA7
M	BOLT SHROUD RETAINER PIN	037SC79
N	BOLT SHROUD RETAINER PIN SPRING	011MCA1
O	PIN Ø 2x14	034RU40
P	COCKING DEVICE RELEASE BUTTON	011SC71
Q	COCKING DEVICE RELEASE BUTTON SPRING	011MF20
R	ALLEN SCREW M3x6	048GE65

100% Italian Made



[zolianantonio.com](http://zolianantonio.com)  
[zoliusa.com](http://zoliusa.com)